

WEST LINK.

Na Ostatnim Groszu St., Wrocław



ABOUT THE BUILDING.

14,216 sq m

TOTAL GLA

2017

YEAR OF COMPLETION

265

PARKING PLACES

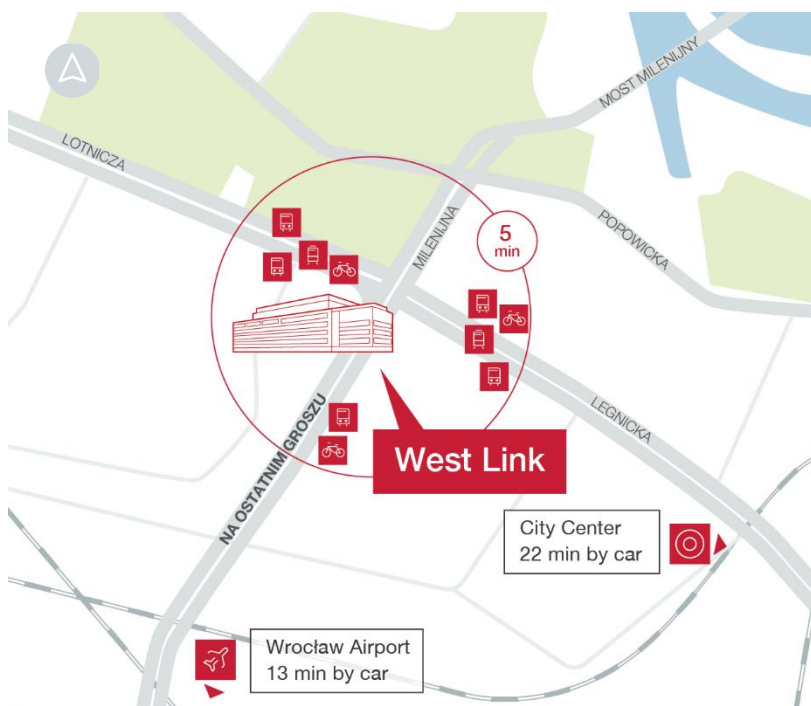
0/0

PARKING PLACE RATIO

Excellent

BREEAM CERTIFICATION

West Link is a modern, five-story A-class office building located on Na Ostatnim Groszu street in Wrocław, next to another Globalworth office building – West Gate. Located in front of the building is a sculpture of a famous Polish designer and architect, Oskar Zięta.



15 min

by car
Old Town

25 min

by car
Main Railway Station

13 min

by car
Wrocław Airport

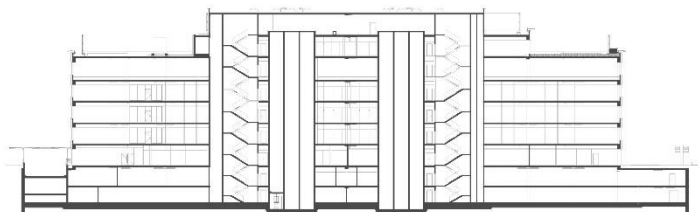
City Center
22 min by car

Wrocław Airport
13 min by car

Tram stop

Bus stop

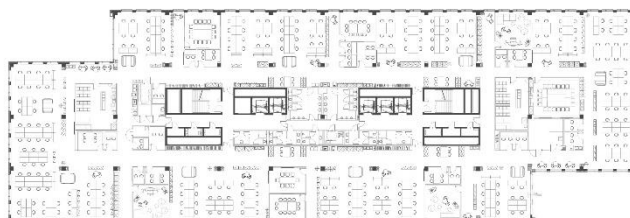
City Bike Wrocław



TYPICAL FLOORPLAN.

3000 sq m

Total leasable area



AMENITIES.

Canteen

Showers and cloakroom for cyclists

Kindergarten



TECHNICAL SPECIFICATION.

BREEAM certificate – Excellent

BMS

Security 24/7 and CCTV

Raised floors

Suspended ceilings

Openable windows

Fiber optics

Air conditioning

Smoke detectors

Contactless Access control system

Two independent power sources

5 passenger lifts and 1 technical lift

Disclaimer: This document is for information purposes only and do not constitute any part of a binding offer or contract.

**Julie Archambault**

M: +48 882 433 752

E: julie.archambault@globalworth.pl

**Magdalena Śnieżek**

M: +48 665 057 475

E: magdalena.sniezek@globalworth.pl