

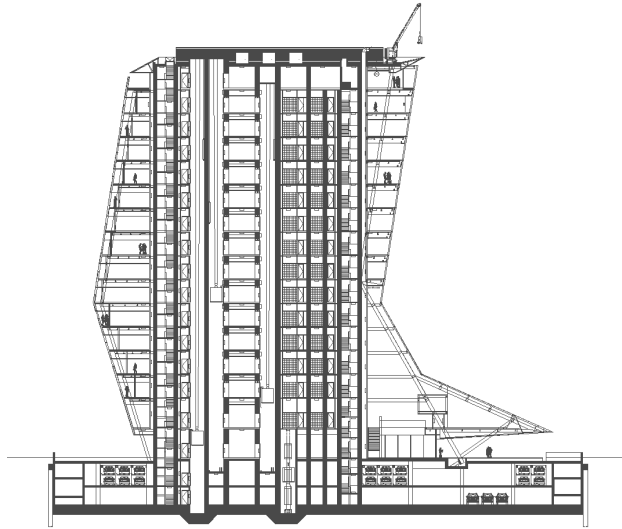
Globalworth UniCredit HQ

UniCredit HQ ranked 17th in the 2013 global list of the most architecturally impressive banks in the world. The property extends over 16 floors above ground and has a conference room with over 100 seats. It is located within a 5-minute walk from Herastrau Park, the biggest park in Bucharest, and has excellent public transport access.

General considerations

Property Name	Globalworth UniCredit HQ
Type	Office
Delivery Year	2019
Address	1F Expozitiei Blvd, District 2
Location	Free Press Square
Floors Number	2UG+GF+15F
Structure	Concrete Reinforced Steel
Office Gross Lettable Area	16.8K sqm
Parking Units	146
Elevators	7
HVAC System	4 pipes
Public Transportation	Subway, tram & bus
Green Accreditation	BREEAM Very Good
Tenants	Unicredit





Restaurant

Canteen

Coffee Shops

Expo Center



BMS

2.8 m clear height

Emergency generator for the vital systems and common area

Control access and video surveillance system

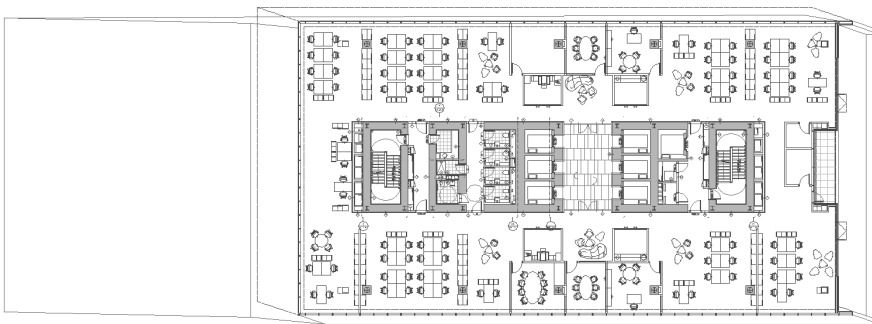
Smoke detectors and fire alarm system

Lighting system

Typical floorplan

1.100 sqm

Total GLA on the floor



globalworth


Ema Iftimie
 Head of Leasing
 +40 (0)372 800 000
 ema.iftimie@globalworth.com

Disclaimer: The Building Particulars are for information purposes only and do not constitute any part of a binding offer or contract.