

RONDO BUSINESS PARK

38 Lublańska St., Kraków



ABOUT THE BUILDING.

20,100 sq m

TOTAL GLA

2008

YEAR OF COMPLETION

490

PARKING PLACES

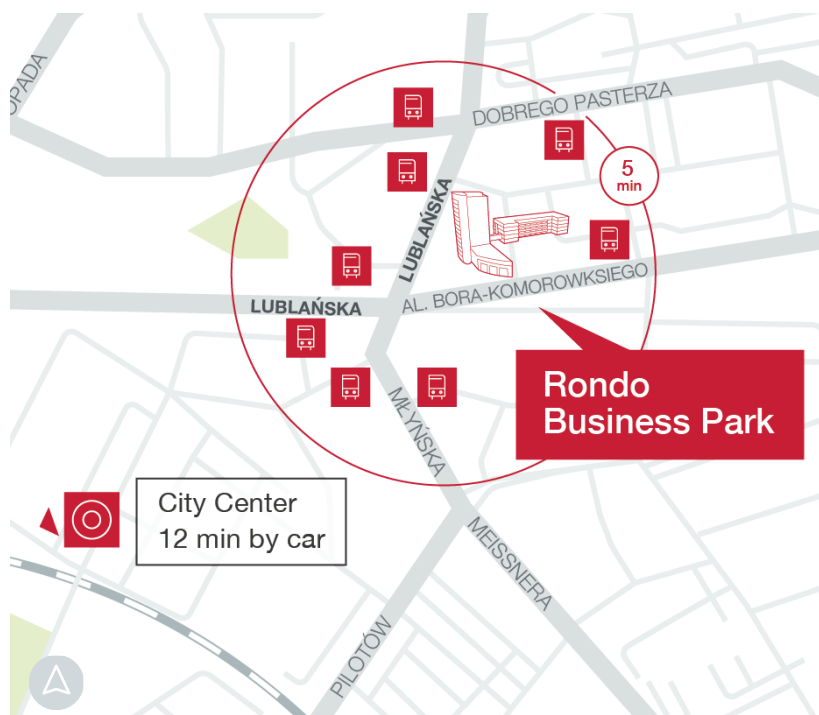
1/60

PARKING PLACE RATIO

Excellent

BREEAM CERTIFICATION

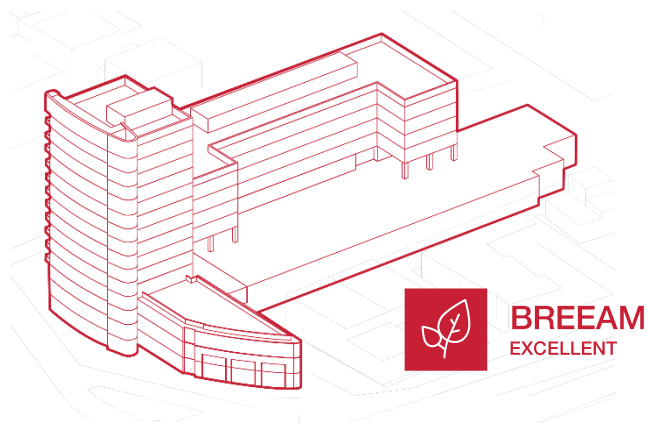
A complex of 3 office buildings located at 38 Lublańska St., at the intersection of Bora-Komorowskiego Av., which is part of Kraków's Ring Road nr3. The location offers easy connections with the S7 expressway and A4 highway, as well as the city centre. The Main Railway Station and Galeria Krakowska shopping centre are 10 min away. Kraków-Balice Airport is 20 min away.



10 min by foot
Auchan

20 min by car
Kraków-Balice Airport

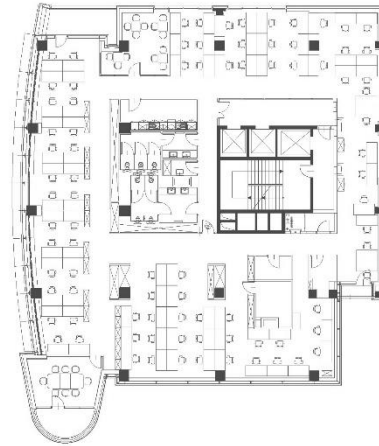
 Bus stop



TYPICAL FLOORPLAN .

1156 sq m

Total leasable area



AMENITIES .

Canteen

Showers and cloakroom for cyclists



TECHNICAL SPECIFICATION .

BREEAM certificate – Excellent

BMS

Security 24/7 and CCTV

Suspended ceilings

Openable windows

Fiber optics

Air conditioning

Smoke detectors

Contactless Access control system

Two independent power sources

9 passenger lifts and 1 technical lift

Disclaimer: This document is for information purposes only and do not constitute any part of a binding offer or contract.



Julie Archambault

Asset Management & Leasing Director

M: +48 882 433 752

E: julie.archambault@globalworth.pl



Adam Iwański

Asset Management & Leasing Manager

M: +48 505 680 548

E: adam.iwanski@globalworth.pl