



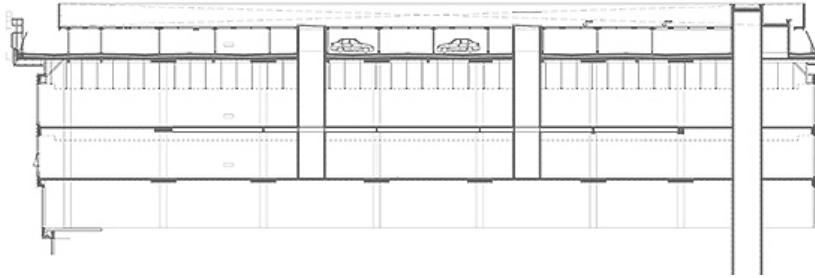
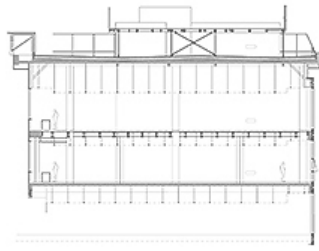
# Supersam

Supersam offers a comfortable combination of office, food & retail experience. Excellent location in the center of Katowice, with convenient access to public transport. The building offers high standards, and was awarded the Breeam certificate – Excellent.

Year of completion	2015
Total GLA	25 000 sq m
Total parking places	400
Total bicycle places	100
<b>Lease conditions</b>	
Office headline rent	13.50 EUR/sq m/mth
Service charge	22 PLN/sq m/mth
Add-on factor:	1,9 %
Parking rent	60 EUR
Parking places ratio	1/55
Minimum lease term	5 years



- |                                |                                |                        |
|--------------------------------|--------------------------------|------------------------|
| 1 BWA Contemporary Art Gallery | 6 Ateneum Theatre              | Bus                    |
| 2 Katowice Hotel               | 7 Światowid Movie Theatre      | Tram                   |
| 3 Courtyard by Marriott        | 8 Silesian Philharmonic        | Public bicycle station |
| 4 University of Silesia        | 9 Silesian College of Medicine |                        |
| 5 Silesian Theatre             | 10 Vienna House Easy Hotel     |                        |

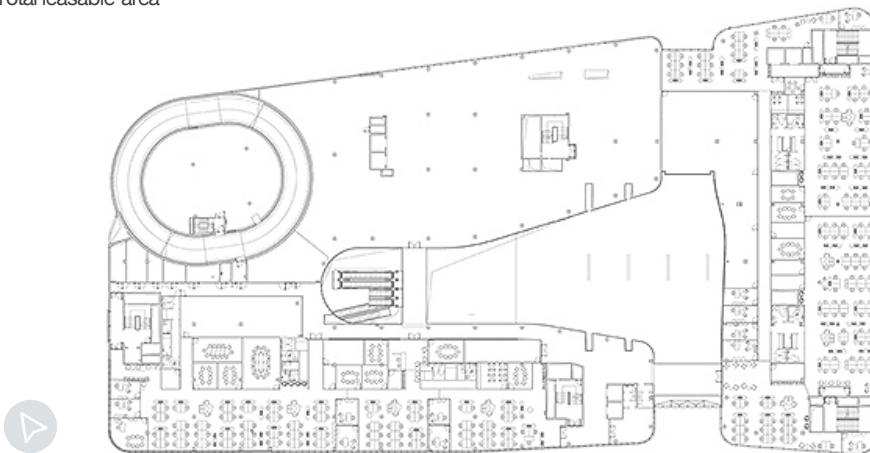


Floor	Carpet Area (sq m)	NLA (sq m)	GLA (sq m)	Use	Availability
2	1004	1076	1097	Office	Immediately (sublease)
3	2117	2252	2295	Office	Immediately (sublease)

## Typical floorplan

6 000 sqm

Total leasable area



- Fitness club
- Supermarket
- Baby changing room
- Health-care center
- Beauty salon
- ATM
- Large car park
- Parking for bicycles



- Security 24/7 and CCTV
- Raised floors
- Suspended ceilings
- Openable windows
- Fiber optics
- Air conditioning
- Smoke detectors
- Contactless Access control system
- BREEAM Excellent
- Two independent power sources
- X Passenger lifts and X technical lift