



# Nordic Park

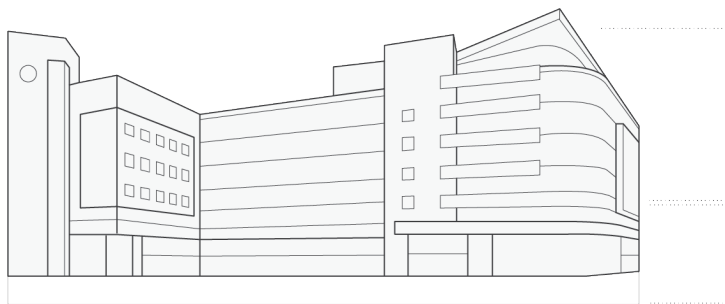
Boutique office building located at 8 Kruczkowskiego St., 100 m away from the Powiśle Railway Station and Poniatowski Bridge. It's interesting architecture and location offers great visibility. Located in Warsaw's fashionable Powiśle district, it provides excellent access to amenities and easy connections with the rest of the districts. The city centre is just 8 min away, while Chopin Airport is 20 min away.

Year of completion	2000
Total GLA	8700 sq m
Total parking places	206

## Lease conditions

Office headline rent	16.50 EUR/sq m/mth
Storage rent	8 EUR/sq m/mth
Service charge	27 PLN/sq m/mth
Add-on factor	6.74%
Underground parking rent	100 EUR
Parking places ratio	1/45
Lease term	5 years





3 to 7  
offices

-1 to 2  
parking



Veturilo station nearby  
Grocery stores and restarurants nearby  
Close to Powiśle Railway Station

Floor	NLA (sq m)	GLA (sq m)	Rent	Use	Availability
3	526	561	16.50	Office	Immediately
5	454	485	16.50	Office	Immediately



24h security  
BMS  
Suspended ceiling  
Smoke detectors  
Fiber optic cables  
Two-sided power supply

## Typical floorplan

1752 sq m  
Total leasable area

