



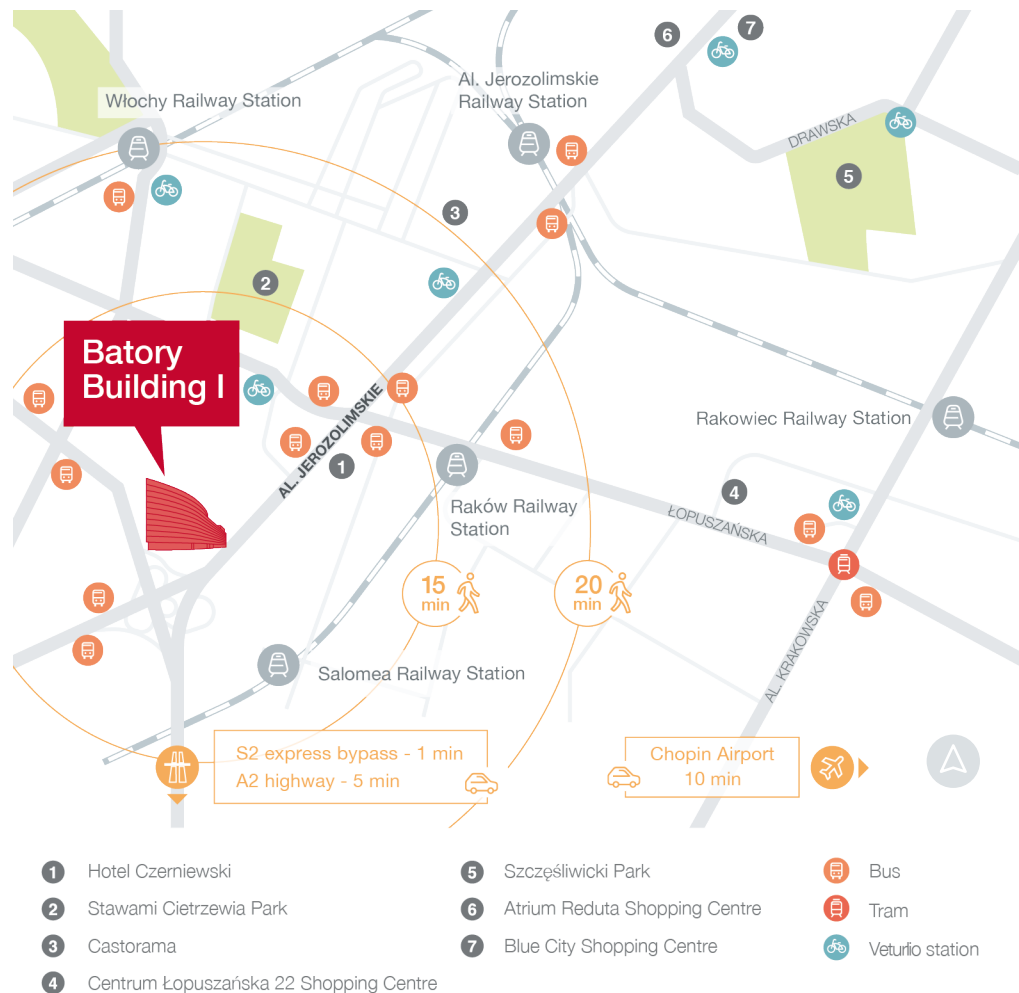
Batory Building I

Batory Building I is part of the two-building complex Batory Office Building. Located at 212A Jerozolimskie Av., one of the city's main arteries. It provides fast connections to Chopin Airport (10 min by car) and the city centre (13 min by car). The proximity of the Express Warsaw Bypass offers excellent access to the A2 highway and all the main cities in Poland.

Year of completion	2000
Total GLA	6610 sq m
Total parking places	230

Lease conditions

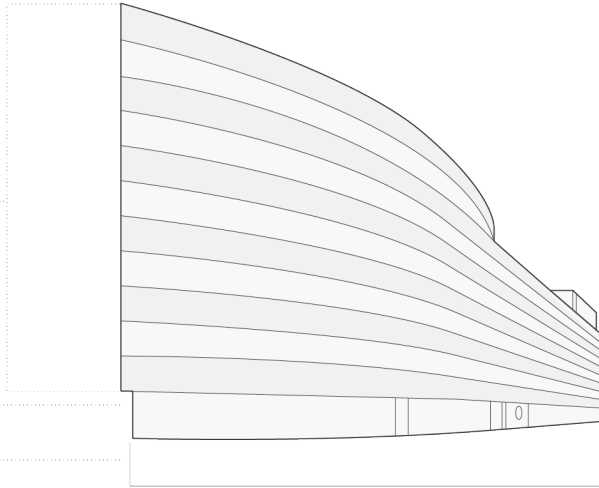
Office headline rent	11.50 EUR/sq m/mth
Service charge	17.95 PLN/sq m/mth
Add-on factor	3.57%
Underground parking rent	60 EUR
Outside parking rent	45 EUR
Parking places ratio	1/35
Lease term	5 years



1 to 5
offices

0
reception & offices

-1
underground
parking



Canteen

Parking for bicycles

Fitness club nearby

Hotel nearby



BMS

24h security

Suspended ceilings

Openable windows

Fiber optics

Floor	NLA (sq m)	GLA (sq m)	Rent	Availability
0	155	160	11.50	Immediately
1	332	334	11.50	Immediately

Typical floorplan

1169 sq m

Total leasable area

