

NORDIC PARK

8 Kruczkowskiego St., Warsaw



ABOUT THE BUILDING

8,700 sq m

TOTAL GLA

2000

YEAR OF COMPLETION

206

PARKING PLACES

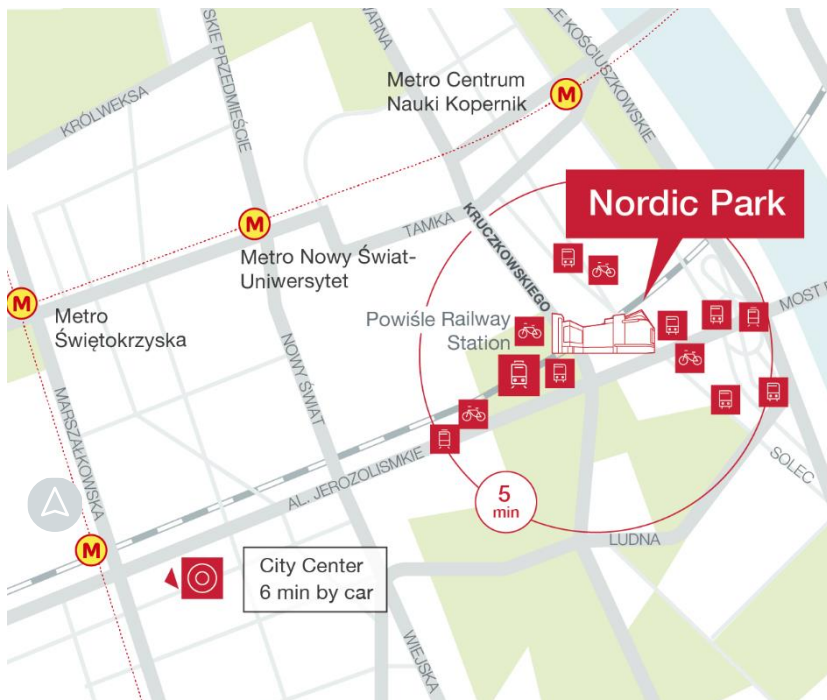
1/45

PARKING PLACE RATIO

Excellent

BREEAM CERTIFICATION

Boutique office building located at 8 Kruczkowskiego St., 100 m away from the Powiśle Railway Station and Poniatowski Bridge. It's interesting architecture and location offers great visibility. Located in Warsaw's fashionable Powiśle district, it provides excellent access to amenities and easy connections with the rest of the districts. The city centre is just 8 min away, while Chopin Airport is 20 min away.



9 min

by tram

Warsaw Central Station

by foot

Centrum Nauki Kopernik

Metro Station

18 min

by car

Old Town

30 min

by car

Chopin Airport



Tram stop



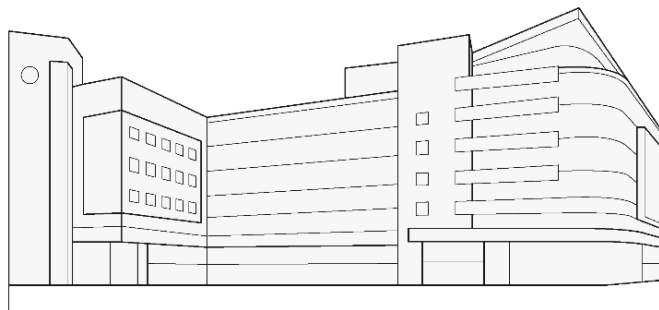
Train station



Bus stop



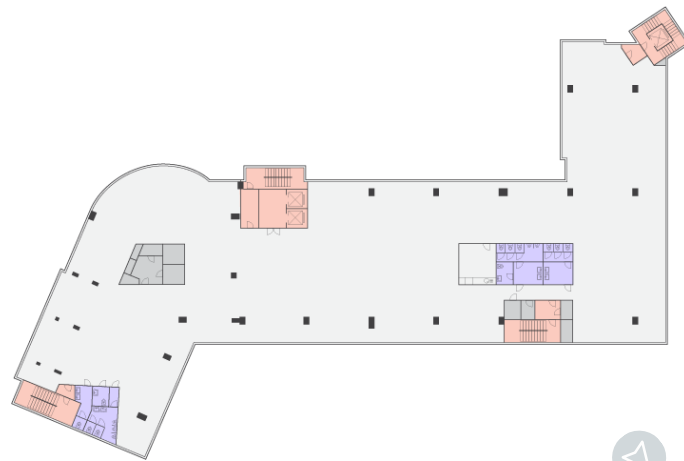
Veturilo



TYPICAL FLOORPLAN

1752 sq m

Total leasable area



AMENITIES

Veturilo station nearby

Grocery stores and restarurants nearby

Close to Powiśle Railway Station



TECHNICAL SPECIFICATION

BREEAM certificate – Excellent

24h security

BMS

Suspended ceiling

Smoke detectors

Fiber optic cables

Two-sided power supply

Disclaimer: This document is for information purposes only and do not constitute any part of a binding offer or contract.



Anna Korwin-Kulesza

Asset Management & Leasing Director

M: +48 695 101 598

E: anna.korwin-kulesza@globalworth.pl



Agnieszka Głuchowska

Asset Management & Leasing Manager

M: +48 664 739 237

E: agnieszka.gluchowska@globalworth.pl