

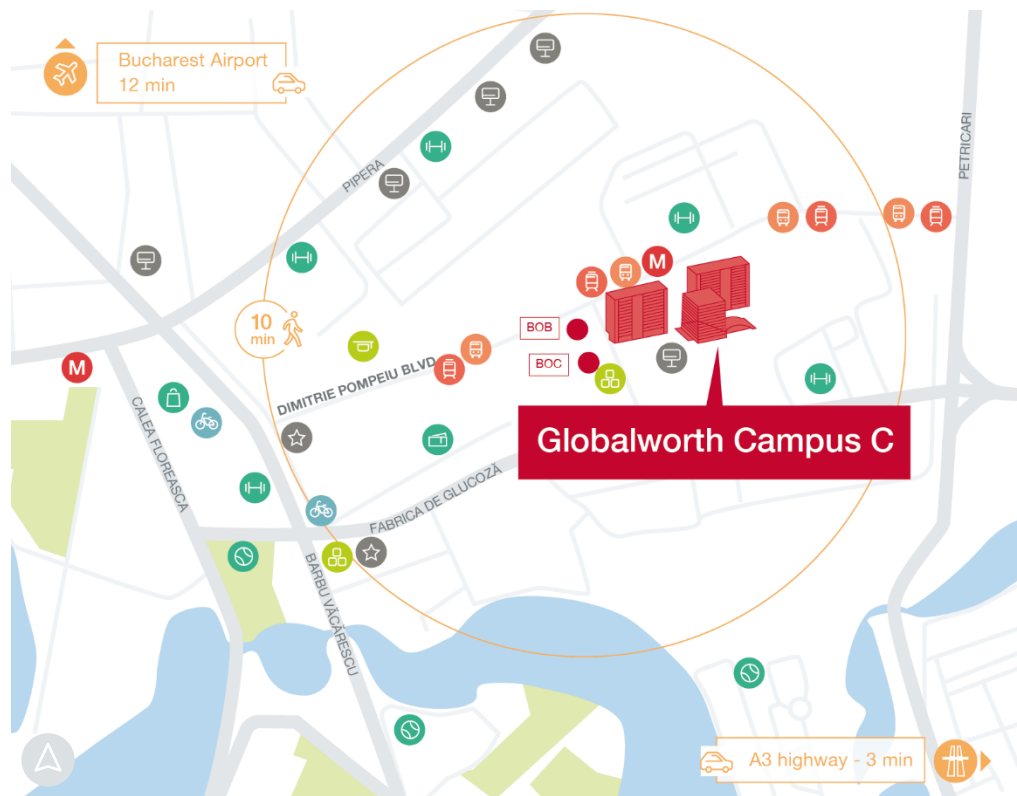


## Globalworth Campus Building C

Campus is combining the highly technical and environmentally-friendly specifications of three Class "A" office towers, along with green areas, Globalworth Campus becomes a top business destination on the Romanian market, establishing itself as one of Bucharest's largest conference centres and a dedicated commercial area.

### General considerations

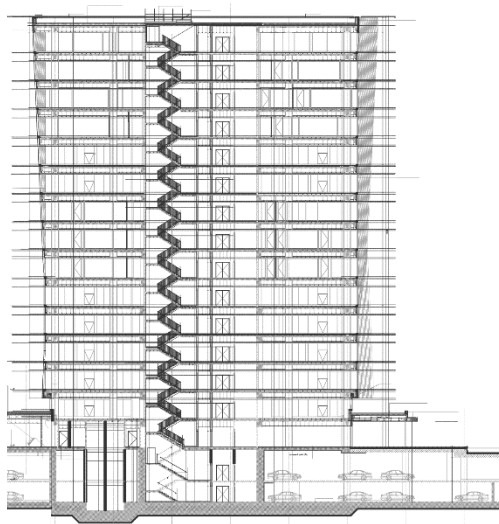
Property Name	Globalworth Campus C
Type	Office
Delivery Year	2019
Address	4-6 Dimitrie Pompeiu Blvd.
Location	Dimitrie Pompeiu
Floors Number	2UG+GF+14f
Structure	Concrete Reinforced Steel
Office Gross Lettable Area	32.5K sqm
Parking Units	760
Elevators	8
HVAC System	4 pipes
Public Transportation	Subway, tram & bus
Green Accreditation	BREEAM
Tenants	Allianz Tiriac, Unicredit Bank



- Kindergarten
- School
- Shopping center
- Gym

- Sport venue
- Cultural center
- Hotel
- Event hall

- Bus
- Tram
- Metro
- I'Velo Urban



Supermarket

Canteen

Cafeteria

Conference Center

Gym



BMS

Telecom and internet services

24h/7 days security and safety

Smoke detectors and fire alarm system

Interior hydrants and sprinkler system

2.8m clear height

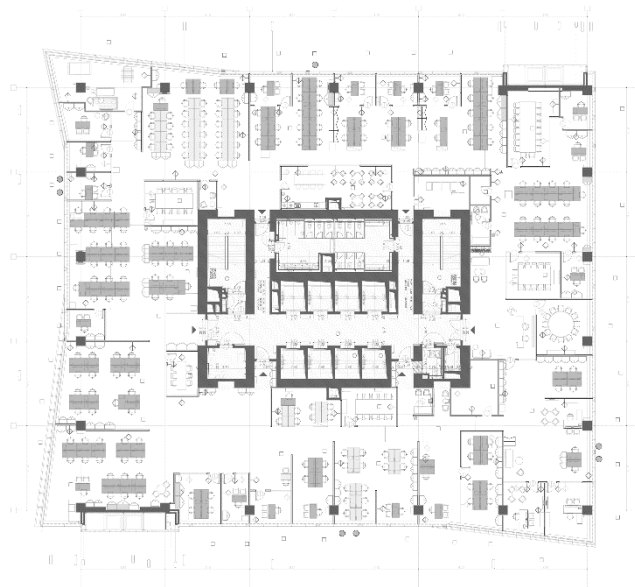
PA System

Openable windows

## Typical floorplan

2.200 sqm

Total GLA on the floor



globalworth  
ppp

Ema Iftimie  
Head of Leasing  
+40 (0)372 800 000  
ema.iftimie@globalworth.com

Disclaimer: The Building Particulars are for information purposes only and do not constitute any part of a binding offer or contract.