

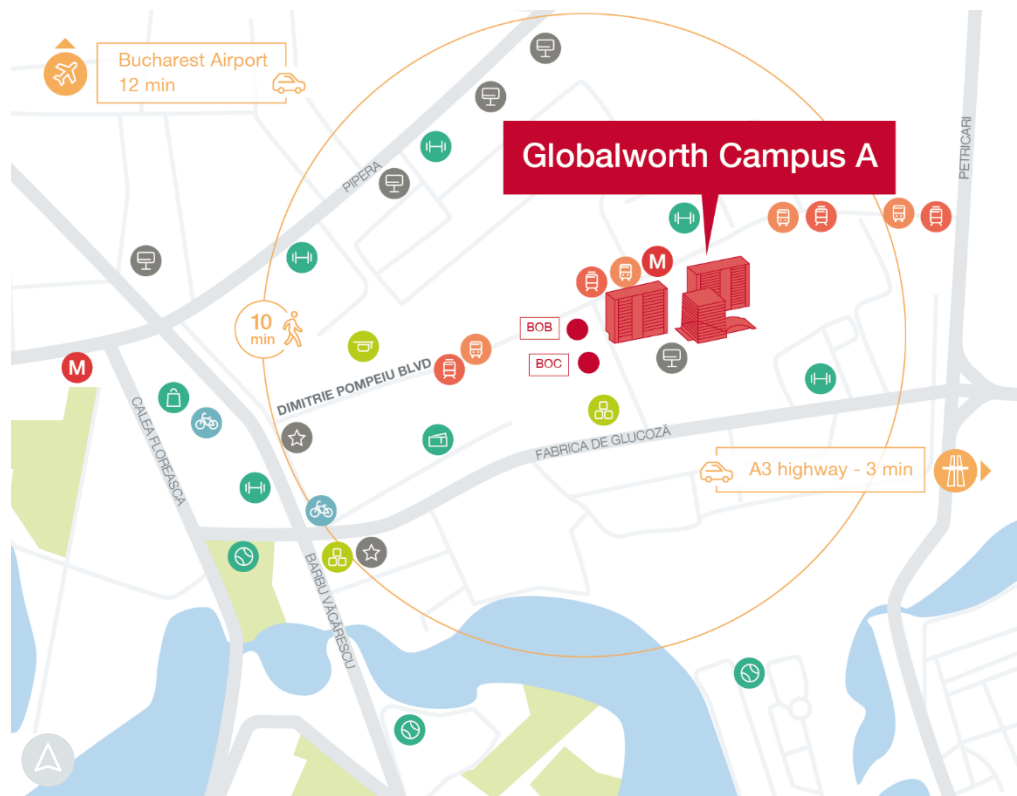


Globalworth Campus Building A

Campus is combining the highly technical and environmentally-friendly specifications of three Class "A" office towers, along with green areas, Globalworth Campus becomes a top business destination on the Romanian market, establishing itself as one of Bucharest's largest conference centres and a dedicated commercial area.

General considerations

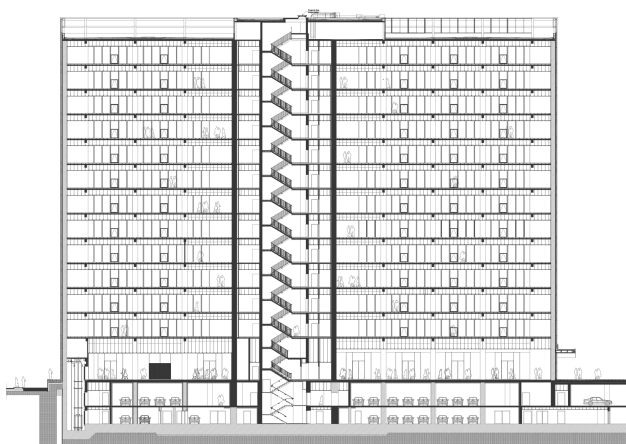
Property Name	Globalworth Campus A
Type	Office
Delivery Year	2017
Address	4-6 Dimitrie Pompeiu Blvd.
Location	Dimitrie Pompeiu
Floors Number	2UG+GF+12f
Structure	Concrete Reinforced Steel
Office Gross Lettable Area	29K sqm
Parking Units	760
Elevators	6
HVAC System	4 pipes
Public Transportation	Subway, tram & bus
Green Accreditation	BREEAM
Tenants	Amazon, Mindspace, Garrett



- Kindergarten
- School
- Shopping center
- Gym

- Sport venue
- Cultural center
- Hotel
- Event hall

- Bus
- Tram
- Metro
- I'Velo Urban



Supermarket

Canteen

Cafeteria

Conference Center

Gym



BMS

Telecom and internet services

24h/7 days security and safety

Smoke detectors and fire alarm system

Interior hydrants and sprinkler system

2.8m clear height

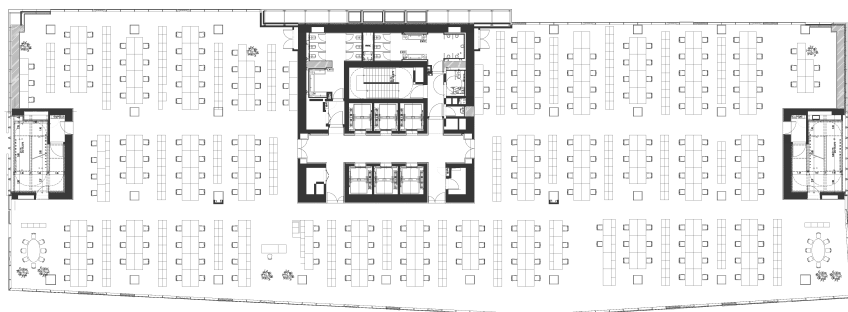
PA System

Openable windows

Typical floorplan

2.200 sqm

Total GLA on the floor



globalworth
ppp

Ema Iftimie
Head of Leasing
+40 (0)372 800 000
ema.iftimie@globalworth.com

Disclaimer: The Building Particulars are for information purposes only and do not constitute any part of a binding offer or contract.