

BLISKI CENTRUM

8 Żurawia St., Warsaw

ABOUT THE BUILDING

8615,83 sq m

TOTAL GLA

1997
YEAR OF COMPLETION

85
PARKING PLACES

0/0
PARKING PLACE RATIO

Excellent
BREEAM CERTIFICATION

The building is just 400 metres away from ul. Marszałkowska, one of Warsaw's most important streets, and close to Al. Jerozolimskie. Important government and financial institutions are located nearby. Bliski Centrum benefits from its close proximity to a wide array of hotels, restaurants and infrastructure (tram and bus stops, the Metro Centrum station, and trains).



15 min by foot
Warsaw Central Station

15 min by foot
Złote Tarasy Shopping Center

20 min by tram
Old Town

23 min by car
Chopin Airport



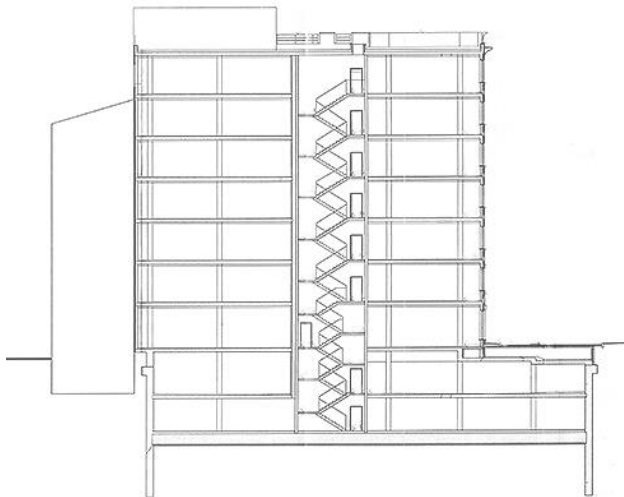
Tram stop



Bus stop



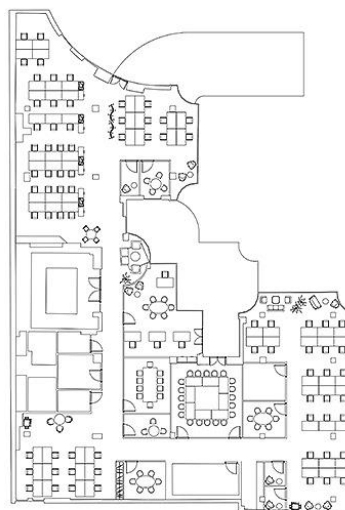
Train station



TYPICAL FLOORPLAN.

750 sq m

Total leasable area



TECHNICAL SPECIFICATION.

BREEAM certificate – Excellent

Security 24/7 and CCTV

Raised floors

Suspended ceilings

Openable windows

Fiber optics

Air conditioning

Smoke detectors

Contactless Access control system

Two independent power sources

2 passenger lifts

Disclaimer: This document is for information purposes only and do not constitute any part of a binding offer or contract.



Anna Korwin-Kulesza

Asset Management & Leasing Director

M: +48 695 101 598

E: anna.korwin-kulesza@globalworth.pl



Agnieszka Gluchowska

Asset Management & Leasing Manager

M: +48 664 739 237

E: agnieszka.gluchowska@globalworth.pl