



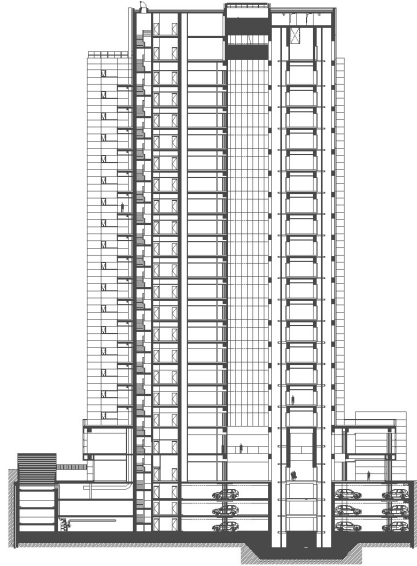
## Globalworth Plaza

Globalworth Plaza is a Class "A" multi-tenant office building with excellent visibility, located in the northern part of Bucharest at the junction of Pipera Road and Barbu Vacarescu Boulevard, right by the entrance to the Calea Floreasca area. The office building faces our Globalworth Tower landmark development and is one of the tallest office tower in Romania.

### General considerations

Property Name	Globalworth Plaza
Type	Office
Delivery Year	2010
Address	42 Pipera Road
Location	Calea Floreasca
Floors Number	3UG+GF+20F
Structure	Concrete Reinforced Steel
Office Gross Lettable Area	24K sqm
Parking Units	336
Elevators	7
HVAC System	4 pipes
Public Transportation	Subway, tram & bus
Green Accreditation	BREEAM Excellent
Tenants	Cegedim, Patria Bank





Notary  
Restaurant  
Pharmacy  
Cafeteria  
Medical Services

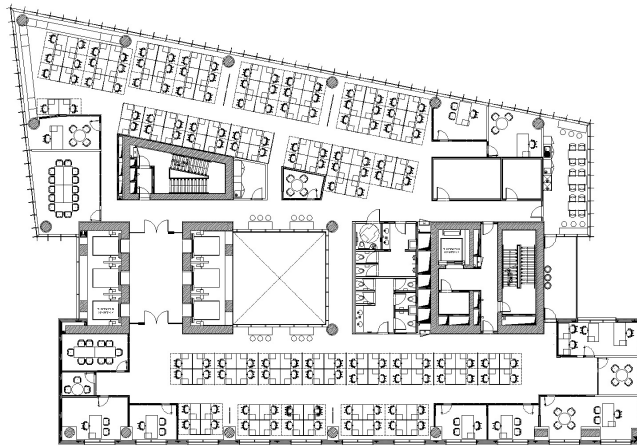


BMS  
2.7m clear height  
High speed elevators  
Emergency generator for the vital systems and common area  
Control access and video surveillance system  
Smoke detectors and fire alarm system  
Interior hydrants and video surveillance system

## Typical floorplan

1.185 sqm

Total GLA on the floor



globalworth  
ppp

Ema Iftimie  
Head of Leasing  
+40 (0)372 800 000  
ema.iftimie@globalworth.com

Disclaimer: The Building Particulars are for information purposes only and do not constitute any part of a binding offer or contract.