

# WEST LINK.

Na Ostatnim Groszu St., Wrocław



## ABOUT THE BUILDING.

**14,216 sq m**

TOTAL GLA

**2017**

YEAR OF COMPLETION

**265**

PARKING PLACES

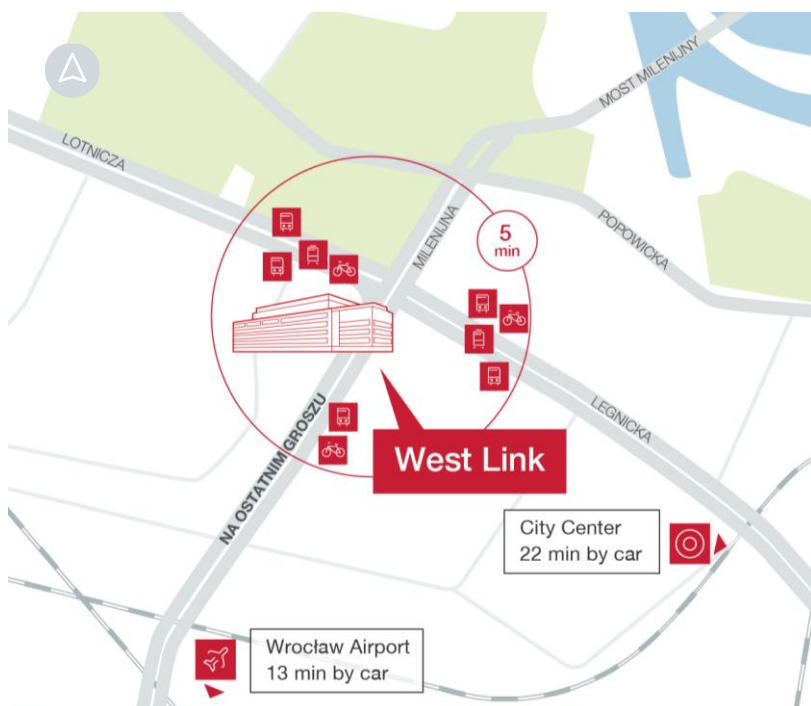
**0/0**

PARKING PLACE RATIO

**Excellent**

BREEAM CERTIFICATION

West Link is a modern, five-story A-class office building located on Na Ostatnim Groszu street in Wrocław, next to another Globalworth office building – West Gate. Located in front of the building is a sculpture of a famous Polish designer and architect, Oskar Zięta.



**15 min**

by car  
Old Town

**25 min**

by car  
Main Railway Station

**13 min**

by car  
Wrocław Airport

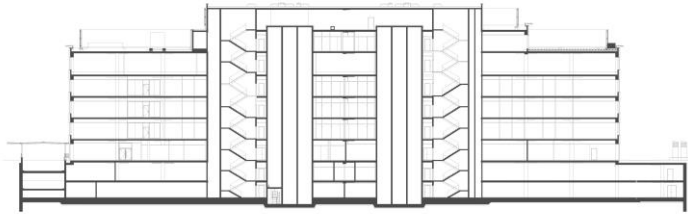
City Center  
22 min by car

Wrocław Airport  
13 min by car

Tram stop

Bus stop

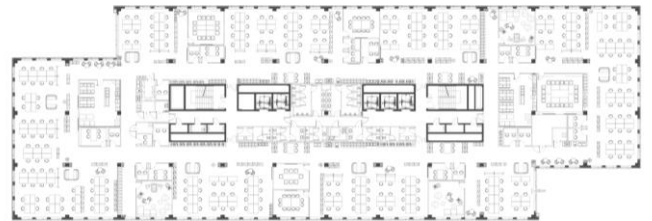
City Bike Wrocław



## TYPICAL FLOORPLAN.

3000 sq m

Total leasable area



## AMENITIES.

Canteen

Showers and cloakroom for cyclists

Kindergarten



## TECHNICAL SPECIFICATION.

BREEAM certificate – Excellent

BMS

Security 24/7 and CCTV

Raised floors

Suspended ceilings

Openable windows

Fiber optics

Air conditioning

Smoke detectors

Contactless Access control system

Two independent power sources

5 passenger lifts and 1 technical lift

Disclaimer: This document is for information purposes only and do not constitute any part of a binding offer or contract.



**Maciej Gołębiewski**

Asset Management & Leasing Director

M: +48 783 376 043

E: maciej.golebiewski@globalworth.pl



**Maryna Dolia**

Asset Management & Leasing Specialist

M: +48 880 337 501

E: maryna.dolia@globalworth.pl