

# RENOMA

40 Świdnicka St., Wrocław

## ABOUT THE BUILDING

**41,000 sq m**

TOTAL GLA

**1930**

YEAR OF COMPLETION

**630**

PARKING PLACES

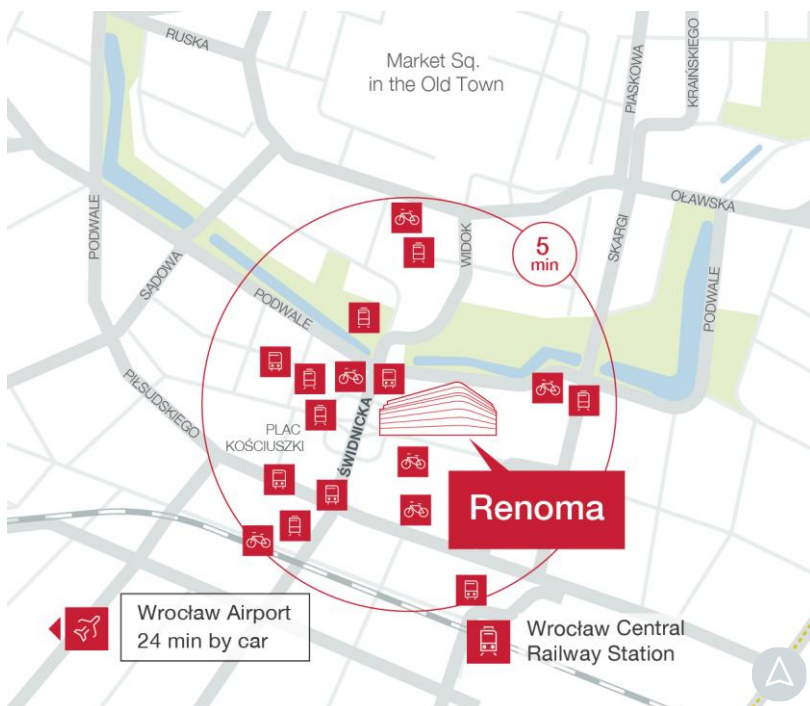
**1/100**

PARKING PLACE RATIO

**Excellent**

BREEAM CERTIFICATION

Renoma is a shopping mall in Wrocław, and was once the biggest as well as the most high-end department store in the city. It is situated at 40 Świdnicka Street which connects the Market Square with Piłsudski Street in the historical centre of the city and Tadeusza Kościuszki Square.



**8 min** by foot  
Central Railway Station

**12 min** by foot  
Market Sq. in the Old Town

**24 min** by car  
Wrocław Airport



Tram stop



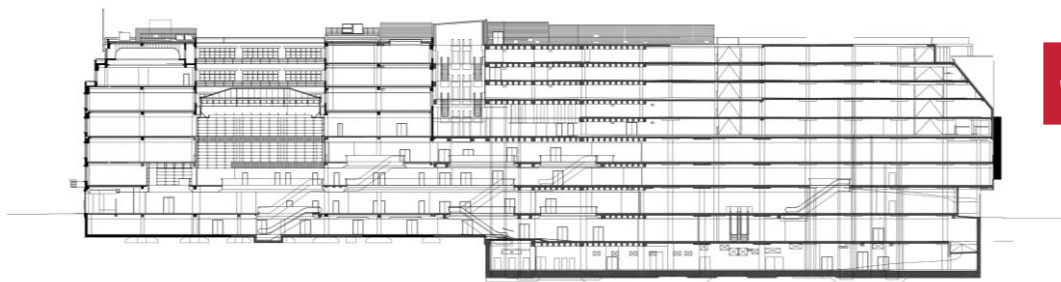
Train station



Bus stop



City Bike Wrocław

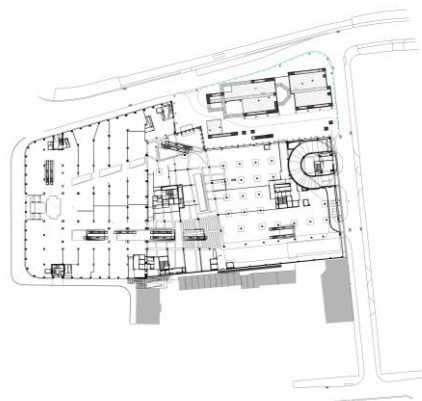


**BREEAM**  
EXCELLENT

## TYPICAL FLOORPLAN.

**8 000 sq m**

Total leasable area



## AMENITIES.

Roof garden

Fitness club

Premium boutiques

Supermarket

Health-care center

Premium boutiques

Baby changing room

Free WiFi in common areas

Electric vehicles charging station

Monitored parking for bicycles



## TECHNICAL SPECIFICATION.

BREEAM certificate – Excellent

Security 24/7 and CCTV

Raised floors

Suspended ceilings

Openable windows

Fiber optics

Air conditioning

Smoke detectors

Contactless Access control system

Two independent power sources

Disclaimer: This document is for information purposes only and do not constitute any part of a binding offer or contract.



**Maciej Gołębiewski**

Asset Management & Leasing Director

M: +48 783 376 043

E: maciej.golebiewski@globalworth.pl



**Maryna Dolia**

Asset Management & Leasing Specialist

M: +48 880 337 501

E: maryna.dolia@globalworth.pl