

# WARSAW TRADE TOWER.

51 Chłodna St., Warsaw

globalworth  
ppp

## ABOUT THE BUILDING.

**45,200 sq m**

TOTAL GLA

**1999**

YEAR OF COMPLETION

**450**

PARKING PLACES

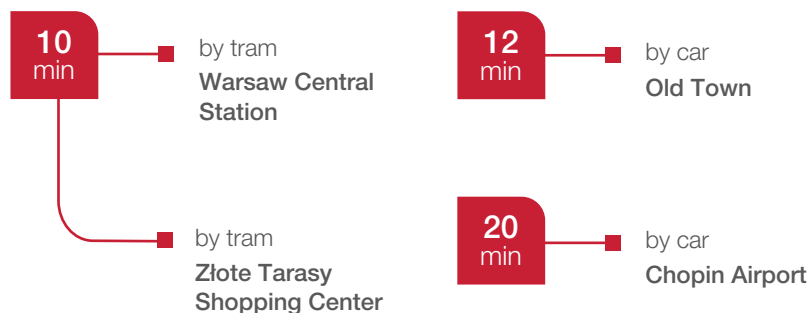
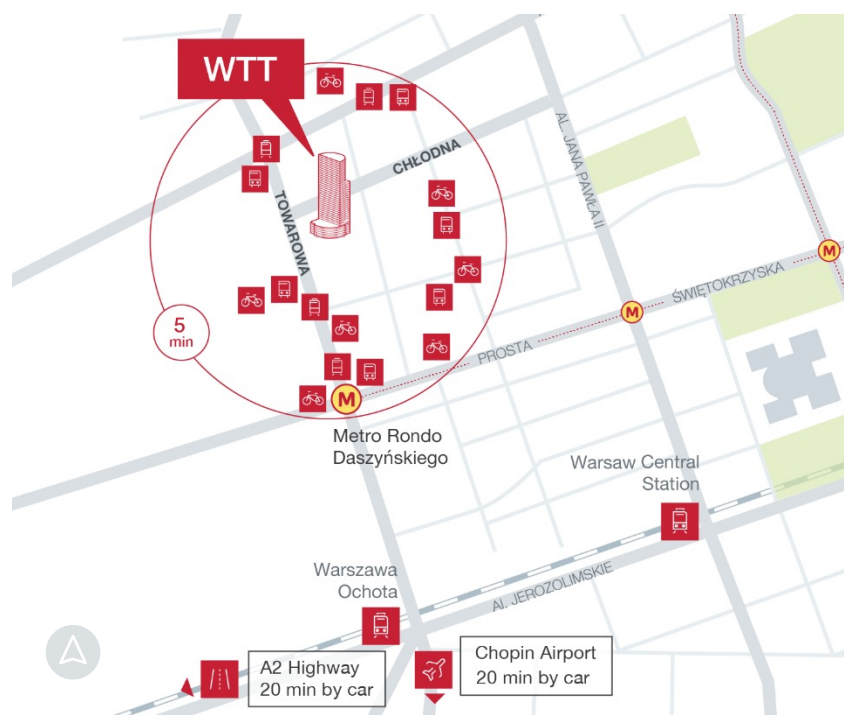
**1/100**

PARKING PLACE RATIO

**Excellent**

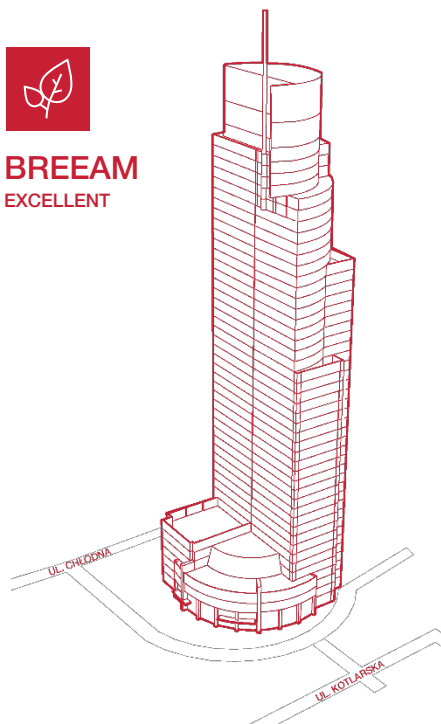
BREEAM CERTIFICATION

Warsaw Trade Tower is located in the proximity of Daszyńskiego roundabout. This dynamic location, in the heart of Warsaw's new business district, offers well developed network of public transportation including quick access to metro and vast number of amenities. WTT maintains the status of one of the most prominent landmarks in the city since 1999, when it was raised.





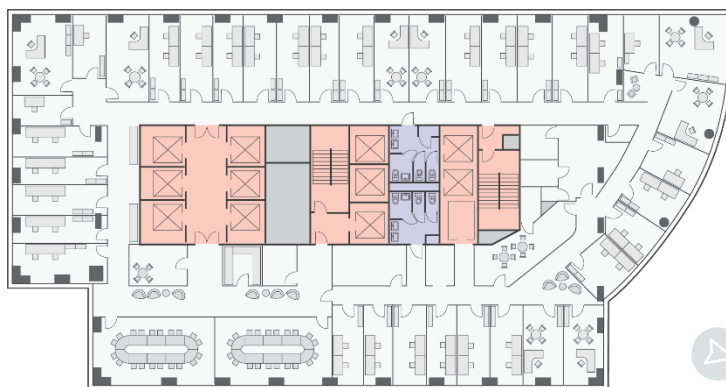
**BREEAM**  
EXCELLENT



## TYPICAL FLOORPLAN.

**1120 sq m**

Total leasable area



## AMENITIES.

Free use of electric cars for the tenants, available to rent anytime

Conference centre & event space on the 35th floor

Dinning room

Fitness room

155 parking places for bicycles

Showers for cyclists

Coffee shop

Canteen

Kiosk

Bakery



## TECHNICAL SPECIFICATION.

BREEAM certificate – Excellent

BMS

Monitored access system

24h security and CCTV

16 high speed elevators

2.60 m offices space height

2 main power supply lines

Equipped with vertical fibre cabling

Raised floors & suspended ceilings

250 kg/sq m load bearing capacity of office space

Office open spaces that offer full flexibility with possibility of partition walls

Carpeting

Fully air-conditioned with individual control

Smoke detectors & sprinkler system

Disclaimer: This document is for information purposes only and do not constitute any part of a binding offer or contract.



**Anna Korwin-Kulesza**

Senior Leasing Manager

M: +48 695 101 598

E: [anna.korwin-kulesza@globalworth.pl](mailto:anna.korwin-kulesza@globalworth.pl)