

WARSAW TRADE TOWER.

51 Chłodna St., Warsaw

globalworth
ppp

ABOUT THE BUILDING.

45,200 sq m

TOTAL GLA

1999

YEAR OF COMPLETION

450

PARKING PLACES

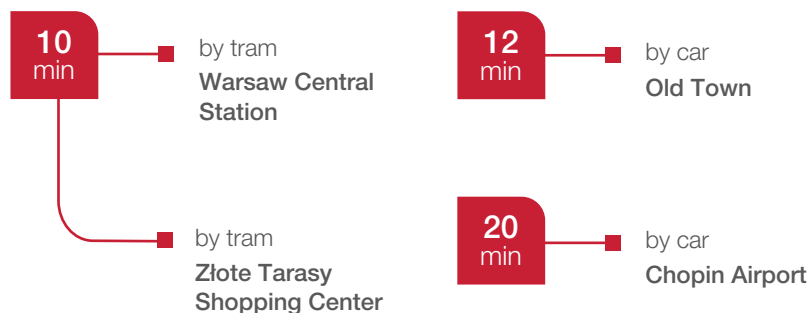
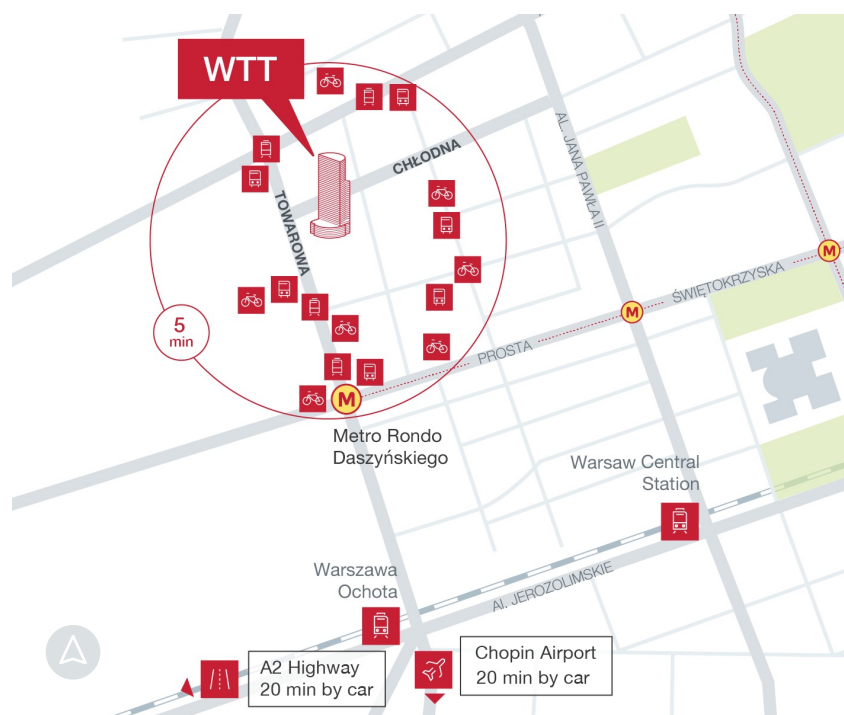
1/100

PARKING PLACE RATIO

Very Good

BREEAM CERTIFICATION

Warsaw Trade Tower is located in the proximity of Daszyńskiego roundabout. This dynamic location, in the heart of Warsaw's new business district, offers well developed network of public transportation including quick access to metro and vast number of amenities. WTT maintains the status of one of the most prominent landmarks in the city since 1999, when it was raised.



Tram stop



Bus stop

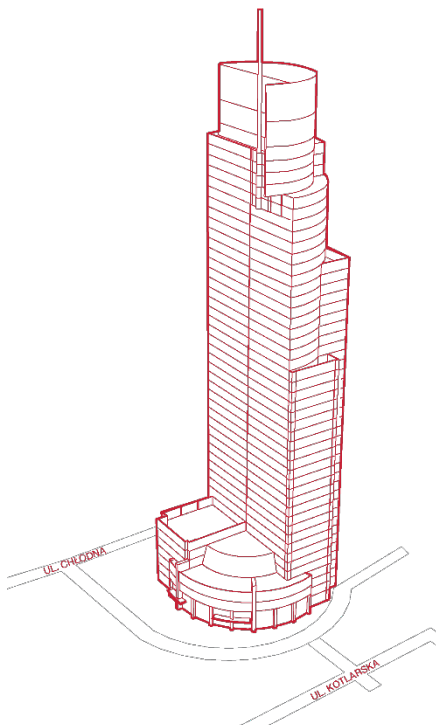


Train station



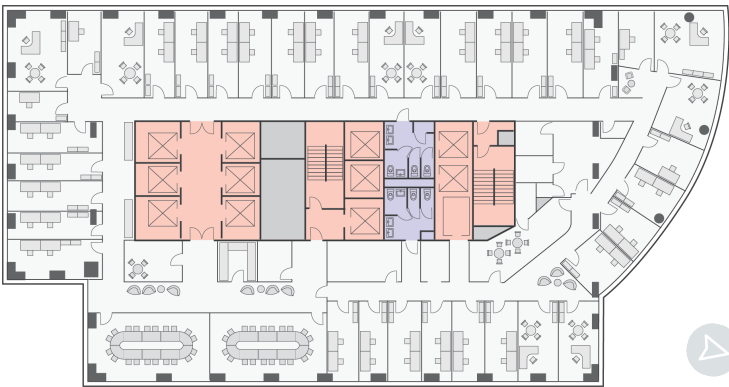
Veturilo

WARSAW TRADE TOWER.



TYPICAL FLOORPLAN.

1120 sq m
Total leasable area



AMENITIES.

- Free use of electric cars for the tenants, available to rent anytime
- Conference centre & event space on the 35th floor
- Dinning room
- Fitness room
- 155 parking places for bicycles
- Showers for cyclists
- Coffee shop
- Canteen
- Kiosk
- Bakery

TECHNICAL SPECIFICATION.

- BREEAM certificate – Very Good
- BMS
- Monitored access system
- 24h security and CCTV
- 16 high speed elevators
- 2.60 m offices space height
- 2 main power supply lines
- Equipped with vertical fibre cabling
- Raised floors & suspended ceilings
- 250 kg/sq m load bearing capacity of office space
- Office open spaces that offer full flexibility with possibility of partition walls
- Carpeting
- Fully air-conditioned with individual control
- Smoke detectors & sprinkler system

Disclaimer: This document is for information purposes only and do not constitute any part of a binding offer or contract.



Anna Korwin-Kulesza
Senior Leasing Manager
M: +48 695 101 598
E: anna.korwin-kulesza@globalworth.pl