

59/10 Złota St., Warsaw



ABOUT THE BUILDING ■

24,800 sq m

TOTAL GLA

2007

YEAR OF COMPLETION

1600

PARKING PLACES

1/90

PARKING PLACE RATIO

Excellent

BREEAM CERTIFICATION

Located in 59 Złota St., Lumen is part of Złote Tarasy, a commercial and office complex. Lumen is located in the strict Warsaw's city centre, just opposite Palace of Culture & Science and in close proximity to the Main Railway Station. Thanks to it's prime location, it offers excellent network of public transportation and a great number of amenities.



8 min

by foot

Metro Centrum Station

20 min

by foot

Three Crosses Sq.

20 min

by car

Chopin Airport



Tram stop



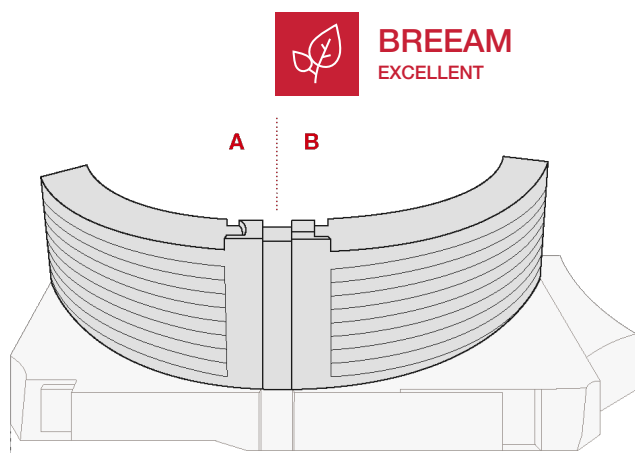
Train station



Bus stop



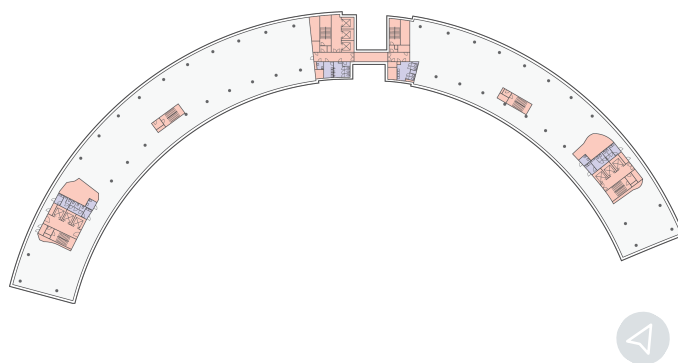
Veturilo



TYPICAL FLOORPLAN.

0000 sq m

Total leasable area



AMENITIES.

Veturilo station located near the building

Showers and parking spaces for cyclists

The building is connected to the shopping center Złote Tarasy



TECHNICAL SPECIFICATION.

BREEAM certificate – Excellent

Reception

Access control

Security

BMS

Fiber optics

Emergency power supply

Air conditioning

Raised floors

Suspended ceilings

Power cabling

Sprinklers

Smoke detectors

Wall partitioning



Anna Korwin-Kulesza

Senior Leasing Manager

M: +48 695 101 598

E: anna.korwin-kulesza@globalworth.pl