

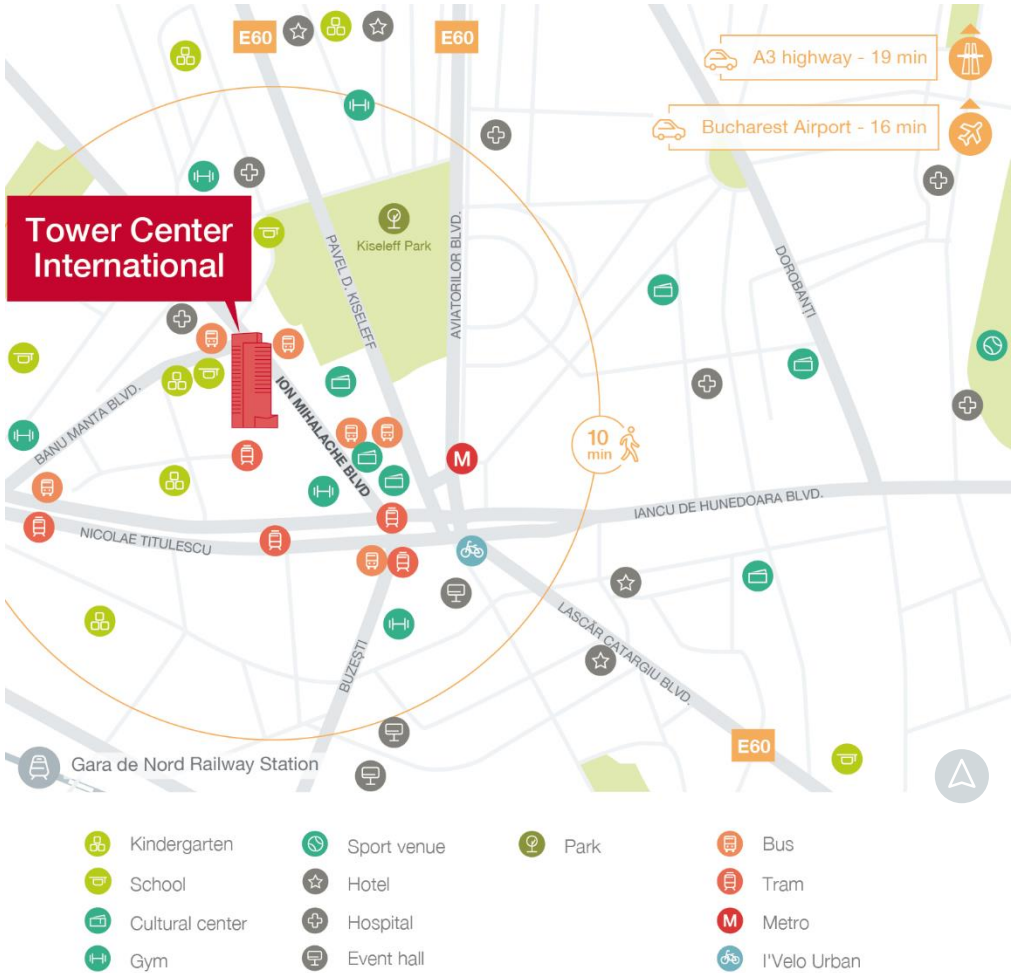


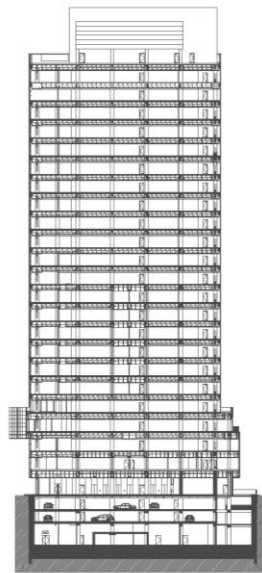
Globalworth Tower Center International

Tower Center International consists of two interconnected buildings and, at 106 meters high, it is currently the third-tallest office property in Bucharest. It benefits from underground parking and excellent public transport with easy access to any point in the city. The office building is certified for BREEAM Very Good.

General considerations

Property Name	Globalworth Tower Center International
Type	Office
Delivery Year	2013
Address	15-17 Ion Mihalache Bd.
Location	Victoriei Square
Floors Number	4UG+GF+25F
Structure	Concrete Reinforced Steel
Office Gross Lettable Area	22.5K sqm
Parking Units	180
Elevators	6+2+1
HVAC System	4 pipes
Public Transportation	Subway, tram & bus
Green Accreditation	BREEAM Very Good
Tenants	E&Y, Cegeka, Hidroelectrica





Supermarket

Bank

Cafeteria

Pharmacy



BMS

2.8 m clear height

Bus Bar electricity distribution system

Emergency generator for the vital systems and common areas of the building

Vertical circulation by means of 6+2+1 Schindler elevators and emergency staircases

Opening windows

Telecom and internet services

24h/7 days security and safety

Control access and video surveillance system

Smoke detectors and fire alarm system

Interior hydrants and sprinkler system

Typical floorplan

840 sqm

Total GLA on the floor

