

Globalworth Square

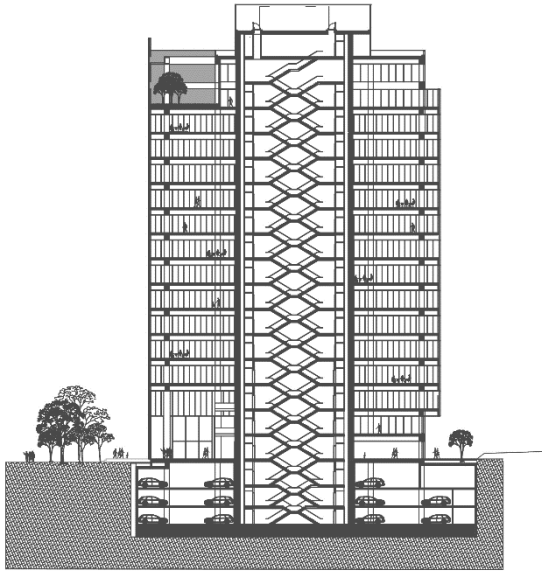
This office building is located in the north part of Bucharest, in the centre of the business activity. Globalworth Square is a very ambitious project, designed as a business hub focused on innovation and efficiency. It will be a hub based on smart efficiency technology, making it one of the most technologically advanced office spaces in Romania.

General considerations

Property Name	Globalworth Square
Type	Office
Delivery Year	2021
Address	44 Pipera st.
Location	Calea Floreasca
Floors Number	3UG+GF+15F+Tech F
Structure	Concrete Reinforced Steel
Office Gross Lettable Area	29K sqm
Parking Units	451
Elevators	7
HVAC System	4 pipes
Public Transportation	Subway, tram & bus
Green Accreditation	BREEAM Outstanding
Tenants	Wipro



- | | | | |
|-----------------|-----------------|-------|--------------|
| Kindergarten | Sport venue | Hotel | Bus |
| School | Cultural center | Park | Tram |
| Shopping center | Hospital | Metro | I'Velo Urban |
| Gym | Event hall | | |



Supermarket
Cafeteria
Restaurants



BMS system
2.8 m clear height
High speed elevators
Openable windows
High efficiency chiller plant combined with ice storage to optimize the energy production process
Photovoltaic panels System
Geo - thermal system used for cooling/heating to increase the amount of nonconventional Energy
UV-C Lamps for the disinfection of fresh air distribution system
Touchless solution for the sanitary objects
Fan-coils Units with EC motors
LED lighting system
Grey water system

Typical floorplan

2.130 sqm
Total GLA on the floor

