

WARTA TOWER

85-87 Chmielna St, Warsaw

globalworth
PPG

ABOUT THE BUILDING

33,600 sq m

TOTAL GLA

2000

YEAR OF COMPLETION

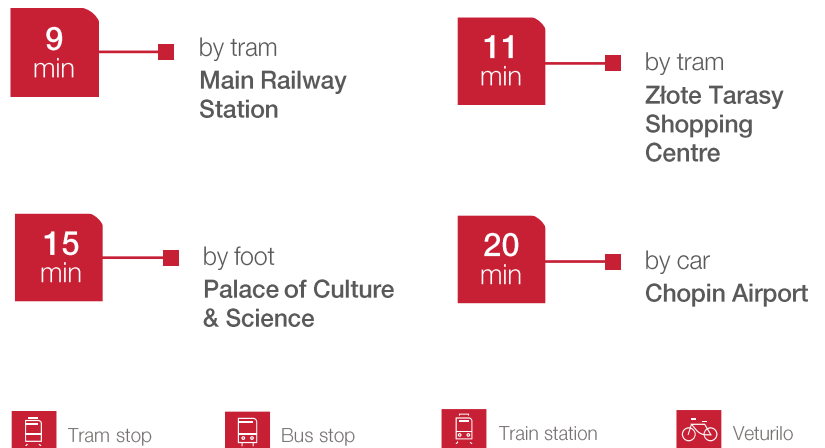
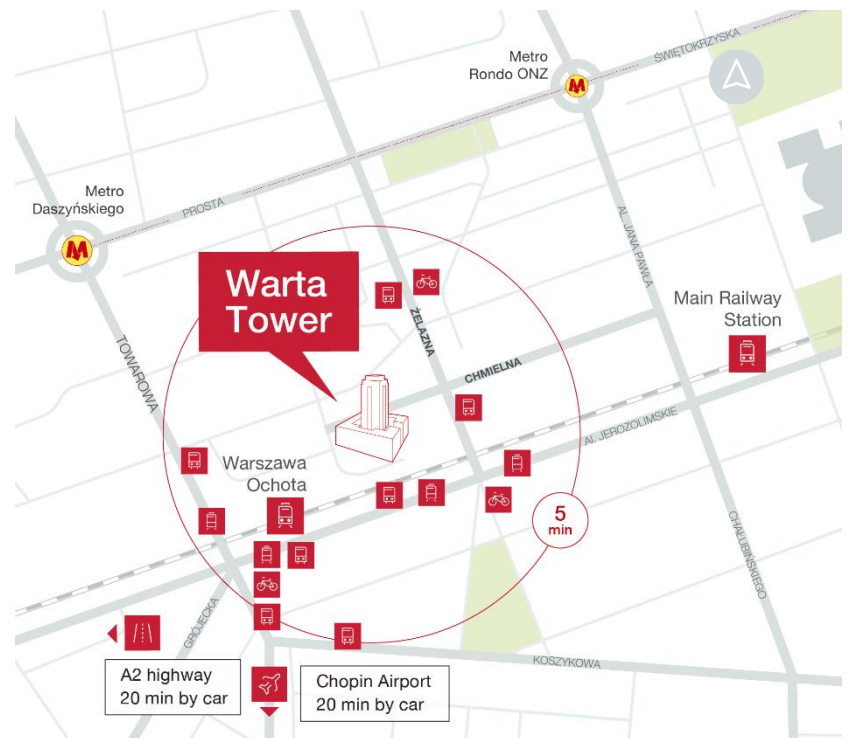
542

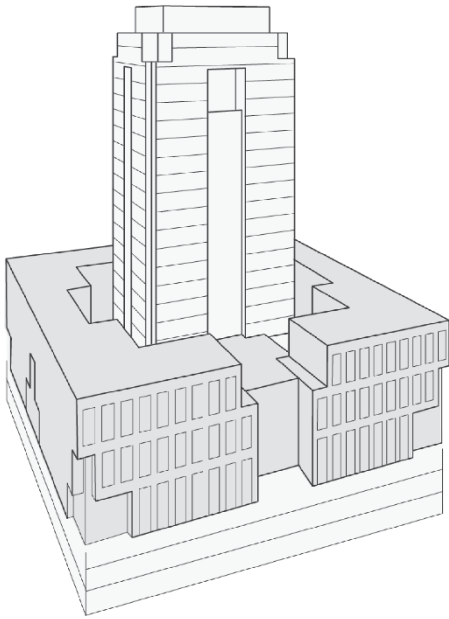
PARKING PLACES

1/60

PARKING PLACE RATIO

Warta Tower is one of the most recognizable office buildings in Warsaw. The property is located on 85-87 Chmielna St., close to Jerozolimskie Av. – one of the capital's main communication arteries, providing fast access to many transportation links. The Main Railway Station and Rondo ONZ metro station are within 10 min walking distance. The International Airport Frederic Chopin is 20 min away by car.

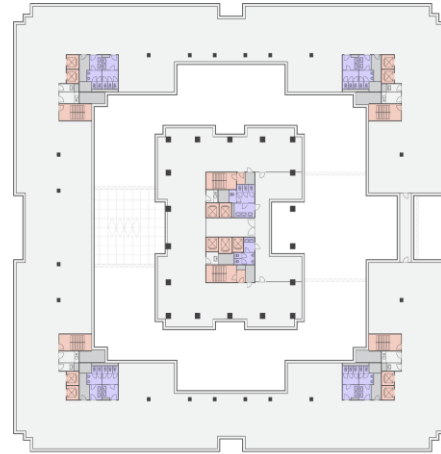




TYPICAL FLOORPLAN.

3000 sq m

Total leasable area



AMENITIES.

Parking for bicycles

Canteen

Coffee shop

Kiosk



TECHNICAL SPECIFICATION.

BMS

Monitored access system

24h security

CCTV

5 high speed lifts in the tower + 1 lift serving underground garage; 2 lifts in each quarter of the podium + 1 lift serving underground garage

Suspended ceilings

Carpeting

Fibre-optic cables

Fully flexible arrangement, from open space to partition walls

Fully air-conditioned

Smoke detectors

Sprinkler system

Disclaimer: This document is for information purposes only and do not constitute any part of a binding offer or contract.



Anna Korwin-Kulesza

Asset Management & Leasing Director

M: +48 695 101 598

E: anna.korwin-kulesza@globalworth.pl



Agnieszka Głuchowska

Asset Management & Leasing Manager

M: +48 664 739 237

E: agnieszka.gluchowska@globalworth.pl