

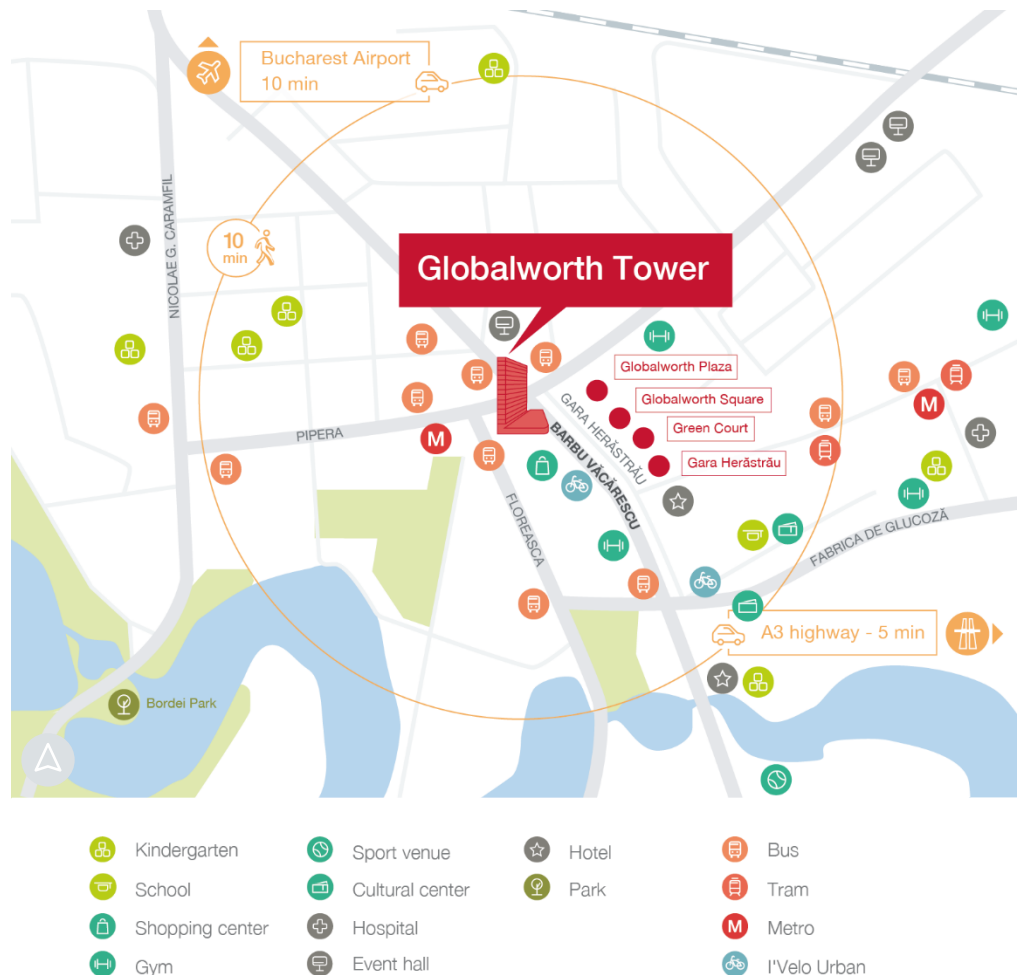


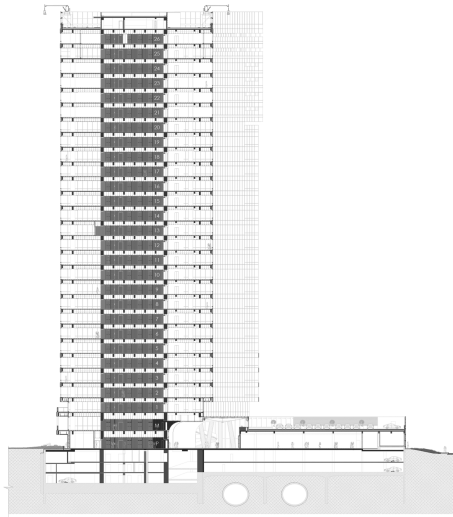
Globalworth Tower

Globalworth Tower is the first building in Romania and the broader SEE region to have received LEED Platinum accreditation, which is the highest available Green accreditation. This premium office building is a "Class A" development with a height of 120m.

General considerations

Property Name	Globalworth Tower
Type	Office
Delivery Year	2016
Address	201 Barbu Vacarescu st.
Location	Calea Floreasca
Floors Number	3UG+GF+26F
Structure	Concrete Reinforced Steel
Office Gross Lettable Area	55K sqm
Parking Units	638
Elevators	9
HVAC System	4 pipes
Public Transportation	Subway, tram & bus
Green Accreditation	LEED Platinum
Tenants	Vodafone, Huawei, Wipro





Supermarket

Canteen

Cafeteria

Restaurants



BMS

2.8 m clear height

Emergency generator for the vital systems and common area

Control access and video surveillance system

Smoke detectors and fire alarm system

Interior hydrants and video surveillance system

Server area

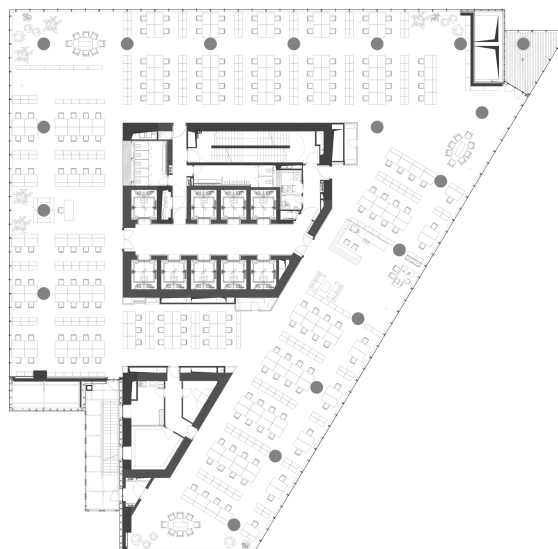
Showers per each floor

Lighting system

Typical floorplan

2.000 sqm

Total GLA on the floor



globalworth
PPPP

Ema Iftimie
Head of Leasing
+40 (0)372 800 000
ema.iftimie@globalworth.com

Disclaimer: The Building Particulars are for information purposes only and do not constitute any part of a binding offer or contract.